

SULTANİYEĞÂH

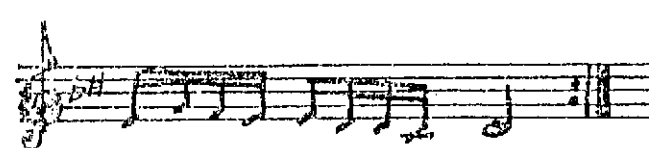
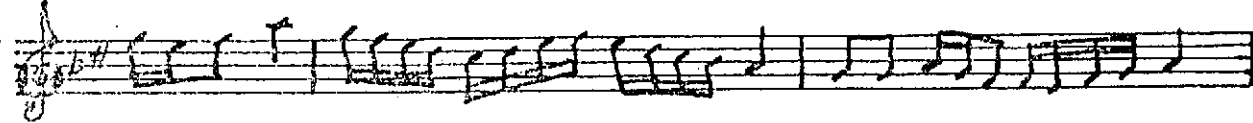
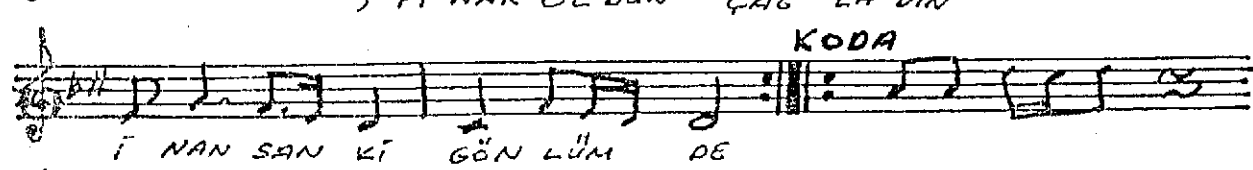
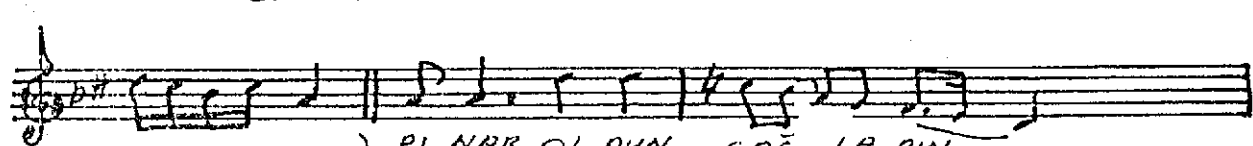
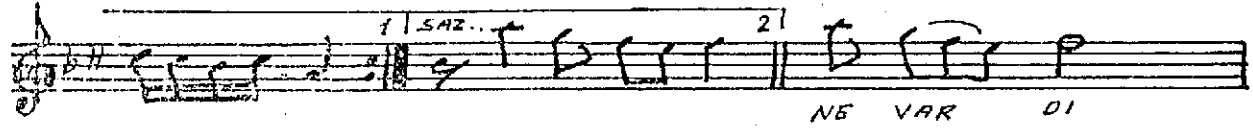
SABAH GÜNEŞİ GİBİ DOĞDU AŞKIN İÇİMDE

(♩ = 160)

DÜYEK

MÜZİK: İSMAİL DEMİRKIRAN

SÖZ : ŞAHİN ÇANGAL



23 EYLÜL 1996 ADANA